

# AILG Annual Dinner

CYNTHIA BARNHART

MIT Museum

May 30, 2018

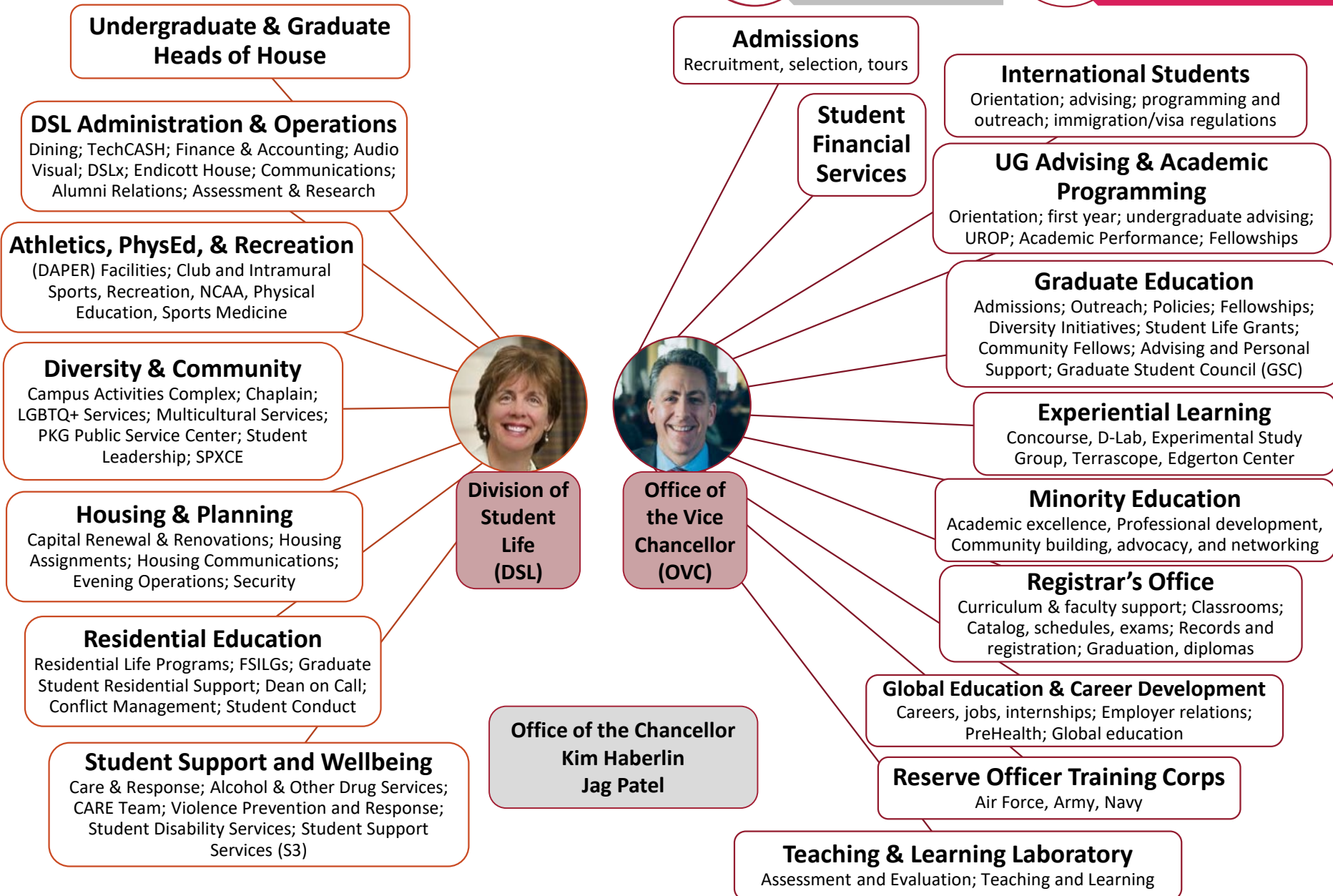
# Areas of Responsibility



**Title IX &  
Bias Response**



**MindHandHeart**  
including Department  
Support Project



**Division of Student Life (DSL)**



**Office of the Vice Chancellor (OVC)**

**Undergraduate & Graduate Heads of House**

**DSL Administration & Operations**  
Dining; TechCASH; Finance & Accounting; Audio Visual; DSLx; Endicott House; Communications; Alumni Relations; Assessment & Research

**Athletics, PhysEd, & Recreation**  
(DAPER) Facilities; Club and Intramural Sports, Recreation, NCAA, Physical Education, Sports Medicine

**Diversity & Community**  
Campus Activities Complex; Chaplain; LGBTQ+ Services; Multicultural Services; PKG Public Service Center; Student Leadership; SPXCE

**Housing & Planning**  
Capital Renewal & Renovations; Housing Assignments; Housing Communications; Evening Operations; Security

**Residential Education**  
Residential Life Programs; FSILGs; Graduate Student Residential Support; Dean on Call; Conflict Management; Student Conduct

**Student Support and Wellbeing**  
Care & Response; Alcohol & Other Drug Services; CARE Team; Violence Prevention and Response; Student Disability Services; Student Support Services (S3)

**Admissions**  
Recruitment, selection, tours

**Student Financial Services**

**International Students**  
Orientation; advising; programming and outreach; immigration/visa regulations

**UG Advising & Academic Programming**  
Orientation; first year; undergraduate advising; UROP; Academic Performance; Fellowships

**Graduate Education**  
Admissions; Outreach; Policies; Fellowships; Diversity Initiatives; Student Life Grants; Community Fellows; Advising and Personal Support; Graduate Student Council (GSC)

**Experiential Learning**  
Concourse, D-Lab, Experimental Study Group, Terrascope, Edgerton Center

**Minority Education**  
Academic excellence, Professional development, Community building, advocacy, and networking

**Registrar's Office**  
Curriculum & faculty support; Classrooms; Catalog, schedules, exams; Records and registration; Graduation, diplomas

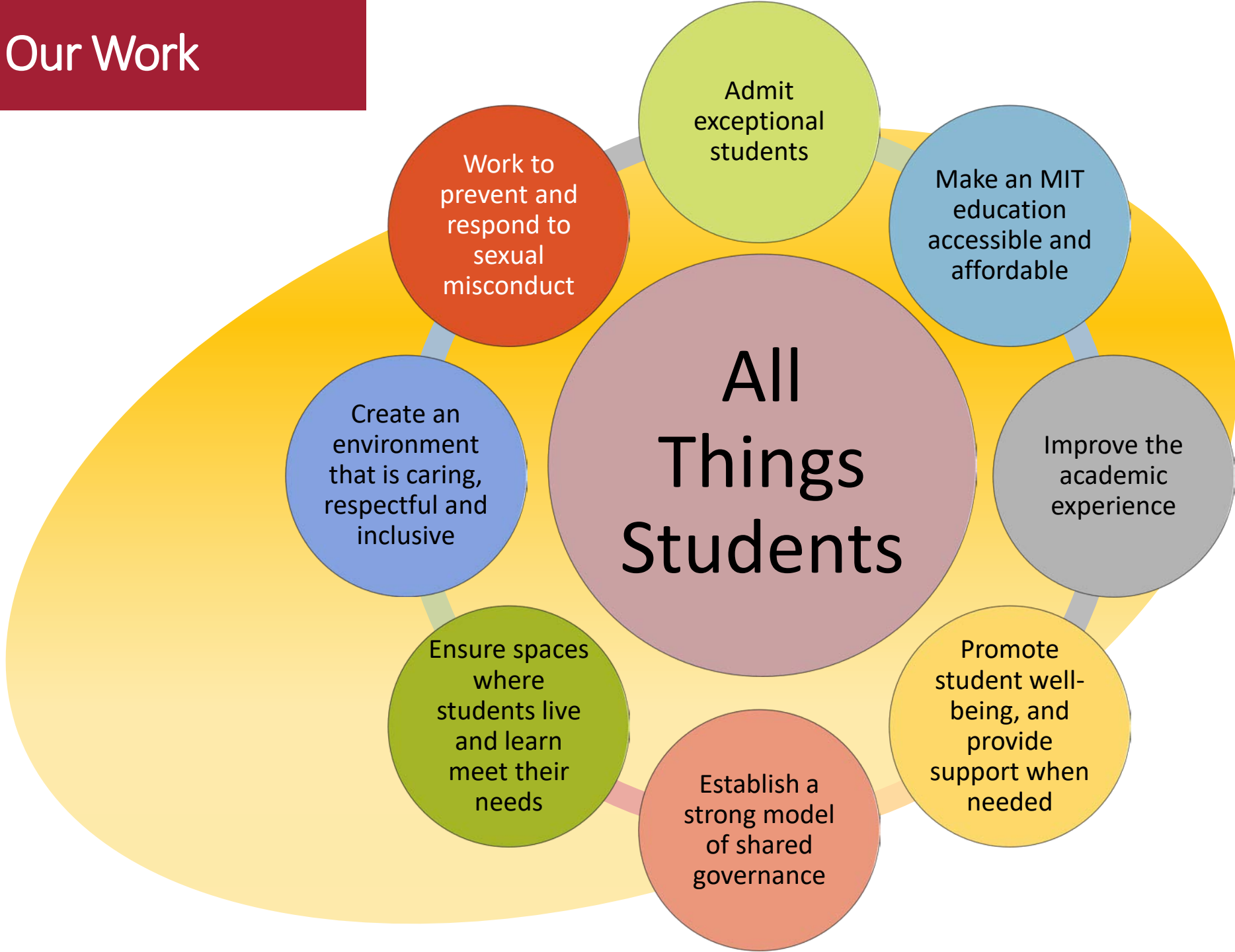
**Global Education & Career Development**  
Careers, jobs, internships; Employer relations; PreHealth; Global education

**Reserve Officer Training Corps**  
Air Force, Army, Navy

**Teaching & Learning Laboratory**  
Assessment and Evaluation; Teaching and Learning

**Office of the Chancellor**  
Kim Haberlin  
Jag Patel

# Our Work



## Activating spaces to meet immediate needs

- Opened **MIT SPXCE Intercultural Center**, close to the center of campus, and moved the **Rainbow Lounge** to the second floor of Walker into the Pritchett Lounge
- Opened **Rebecca's Cafe** at Walker Memorial

## Planning for the future

- Building **new and renewing existing residences**
- Advancing **FSILG Facilities Assessment project** to understand renewal needs and ensure FSILGs remain vibrant part of MIT community
- Nearing completion of **Phase II of West Campus Village exploration**
  - Report expected next month
  - Potential next step: identify funding for feasibility study
- Assist Resource Development in generating **excitement for the space programs and capital projects** that support our students

