



Amherst Alley Beautification – addressing shared concerns

A cooperation of 6 groups, which provided

- an alumni & student living & learning experience**
- several improvements this year**
- an exciting vision for the future**
- a fundraising opportunity**



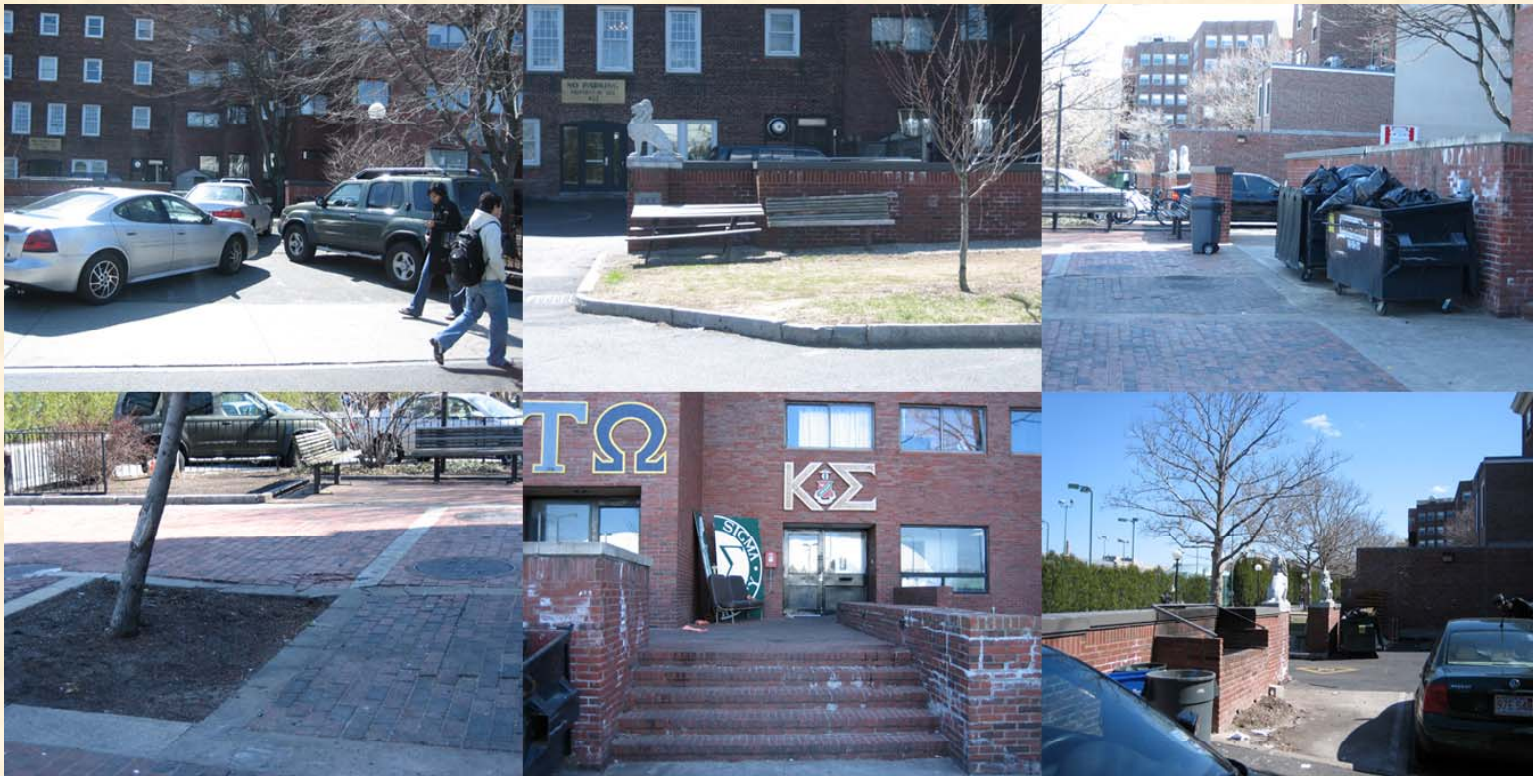
Amherst Alley – a short history

- **1913 – Delta Psi moves from No. 6 Louisburg Sq, Boston to 428 Charles River Road ((i.e. Memorial Drive)**
- **1919 – Phi Beta Epsilon moves to 400 Charles River Road**
- **1926 - Delta Kappa Epsilon builds next door**
- **1966 – Theta Delta Chi moves from Boston to buy former Dean’s Home next to Baker House**
- **1974 – Alpha Tau Omega and Kappa Sigma build twin houses at 405 & 407 on MIT-leased land**
- **1984-5 Amherst Alley moved toward Briggs Field**
- **2000? – MIT buys Amherst Alley from City**
- **2007 – MIT Facilities begins sidewalk renewal along Alley**
- **Sept, 2008 – Amherst Alley Beautification team first meets**



Massachusetts Institute of Technology
Division of Student Life

Amherst Alley 2007 an important campus thoroughfare



Amherst Alley Beautification Project □ August 2009



Amherst Alley Stakeholders Group

- **Five fraternities (TDC, PBE, DKE, ATO, KS) and two residence halls (Baker and Burton-Conner)**
- **Met six times since 9/18/08 – all represented**
- **Developed RFP in October, 2008 with guidance from architect Tom Stohlman (MIT '76)**
- **Student team selected on November 10 – Ira Winder '10 and Anna Kotova '10**
- **Surveys and interviews conducted thru December**
- **Alternate designs developed during January (IAP)**
- **“Shared Streets” unanimously supported on February 3**
- **Scheme 3 finalized in April**
- **Plans at <http://groups.google.com/group/amherst-alley>**



Massachusetts Institute of Technology
Division of Student Life

Scheme 3 – an exciting streetscape



Amherst Alley Beautification Project □ August 2009



Accomplishments to date

- Consensus vision on future
- Dumpsters removed (ATO, KSA, PBE) – trash goes to Burton and Baker
- Recycling program started
- Integration into Residential Life's 2030 Vision
- Part of capital campaigns for PBE and DKE
- ATO Reconstruction, new roof with KS
- KS working with Facilities on landscaping
- All planning for more external bike storage