



FSILG Facilities Renewal

AILG Plenary

November 14, 2019

FSILG Facilities Renewal Overview

- Goal: to **promote and support implementation** of the physical renewal of MIT's FSILG residences.
- **2018-present - FSILG Facilities Renewal Committee:** Formed to facilitate improvements by implementing the recommendations of the facilities assessments.
- Focusing on **community-wide** life safety system upgrades.

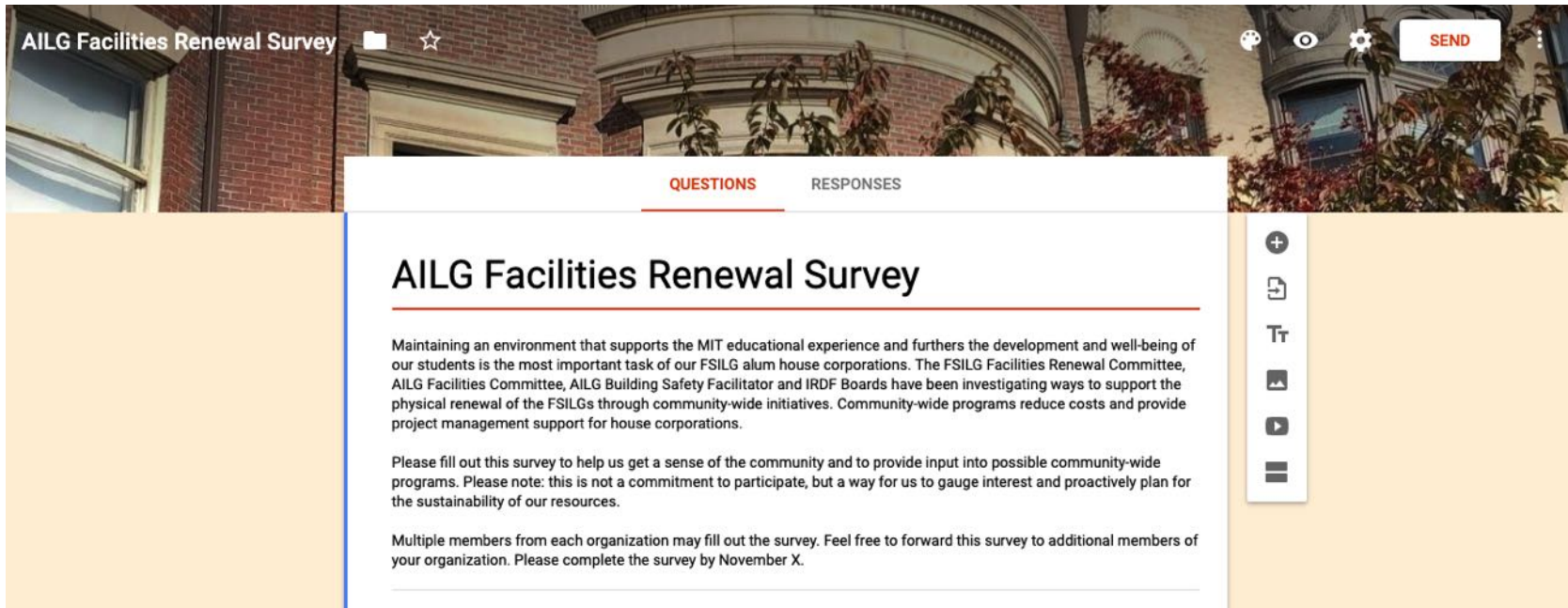


FSILG Life-Safety Improvement Program Concept

	PHASE 1 (2019-20)	PHASE 2 (2020-22)	PHASE 3 (2022-28)
Conceptual Project Scope	Repair/replace egress doors and hardware	Upgrade fire alarms	Upgrade sprinkler systems
Proposed Funding	IRDF	IRDF	IRDF
Estimated Cost	<\$700K Average \$17K/house Range \$0-\$30K	<\$3M ~\$90K/house ~ 6 with new systems	~\$5M >\$100K/house; Several with new systems
Proposed Project Management	Project manager overseen by FSILG Facilities Renewal Committee	Project manager overseen by FSILG Facilities Renewal Committee	Project manager overseen by FSILG Facilities Renewal Committee

2019-2028

AILG Facilities Renewal Survey



The screenshot shows a survey interface with a header image of a brick building. The title 'AILG Facilities Renewal Survey' is in the top left. A 'SEND' button is in the top right. Below the header, there are two tabs: 'QUESTIONS' (active) and 'RESPONSES'. The main content area contains the survey title, a paragraph of introductory text, a request to fill out the survey, and a note about multiple members per organization. A vertical toolbar on the right side contains icons for adding, sharing, printing, and other actions.

AILG Facilities Renewal Survey

QUESTIONS RESPONSES

AILG Facilities Renewal Survey

Maintaining an environment that supports the MIT educational experience and furthers the development and well-being of our students is the most important task of our FSILG alum house corporations. The FSILG Facilities Renewal Committee, AILG Facilities Committee, AILG Building Safety Facilitator and IRDF Boards have been investigating ways to support the physical renewal of the FSILGs through community-wide initiatives. Community-wide programs reduce costs and provide project management support for house corporations.

Please fill out this survey to help us get a sense of the community and to provide input into possible community-wide programs. Please note: this is not a commitment to participate, but a way for us to gauge interest and proactively plan for the sustainability of our resources.

Multiple members from each organization may fill out the survey. Feel free to forward this survey to additional members of your organization. Please complete the survey by November X.



IRDF50⁺
YEARS

INDEPENDENT RESIDENCE DEVELOPMENT FUND

IRDF Update

AILG Plenary

November 14, 2019

IRDF: History

~ Founded in 1964 by MIT alumni ~

The IRDF is a special MIT fund offering **targeted grants** and **low-interest loans** to help FSILGs improve their residences, make them accessible to students with disabilities, and enhance the safety and educational spaces of their residences.



IRDF 50⁺ YEARS
INDEPENDENT RESIDENCE DEVELOPMENT FUND

IRDF: Evolving Over Time

IRDF programs have evolved to meet the needs of the community – the IRDF started as a loan program and added a grant program in 1997.



New programs for 2019

- Addition of historic preservation as an eligible expense
- Micro-loans
- Use of IRDF for capital campaigns



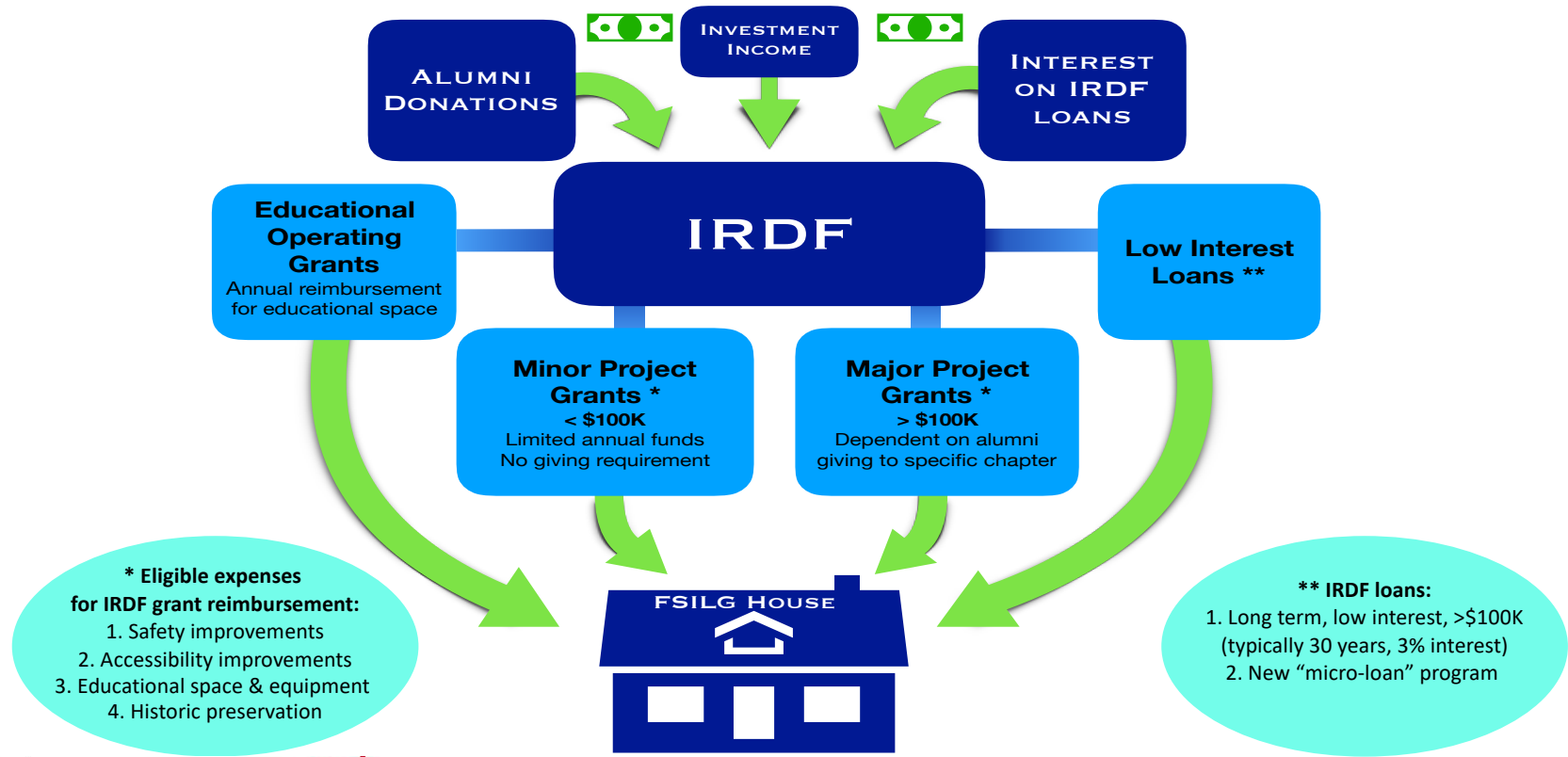
IRDF50⁺ YEARS
INDEPENDENT RESIDENCE DEVELOPMENT FUND

IRDF: Governance

- **Board of Allocation**
Dave Latham '61, Steve Stuntz '67, and Susan Woodmansee '97
- **Grant Advisory Board**
Pamela Gannon '84, Tom Holtey '62, and Sara Wilmer '03
- **Architectural Review Board - NEW**
Steve Baker '84, Ilkka Suvanto '68, Barbara Thornton '80
- Support is provided by Kevin Milligan of the MIT Finance Office, Pamela Gannon '84 of the Division of Student Life, and Scott Klemm of the FSILG Cooperative, Inc.



IRDF: Overview



IRDF 50⁺ YEARS

INDEPENDENT RESIDENCE DEVELOPMENT FUND

IRDF: Programs

1. Low Interest Loans

- No giving requirement
- Micro-loan program (<\$100,000) - **NEW**

2. Educational Operating Grants (EOGs) => ~\$450,000 total annually

- Each FSILG applies and receives annually
- For operating expenses related to educational space

3. Minor Project Grants (~\$200,000 total annually) => Reimbursement

- No giving requirement
- Allocated annually, FSILG must apply, limited funds available

4. Major Project Grants (>\$100,000 each) => Reimbursement

- Giving requirement – for capital campaigns
- Organization's capital campaign directs contributions to IRDF (90/10 split - **NEW**)

5. Community-Wide Programs

- To implement system-wide upgrades and improvements



IRDF50⁺
YEARS
INDEPENDENT RESIDENCE DEVELOPMENT FUND

What Can the IRDF Provide Reimbursement For?

The IRDF can provide reimbursement through **grants** for:

- Educational equipment
- Safety improvements
- Accessibility
- Historic preservation - **NEW!**

We want you to improve your houses and apply for project grants and loans!

IRDF: FY2019 (July 1, 2018-June 30, 2019)

- **Donations to the IRDF**

\$780,000 total gifts: \$400,000 considered “unrestricted”

870 total gifts

Range \$5 - \$100,000; Median \$100

- **Donors**

Alums, students, spouses, parents, friends, matching funds

Members of every FSILG

- **Highlights**

Youngest donors: Hilary Vogelbaum '20 AXO, Matthew Tung '20 PLP,
Michael Trinh '19 ZP

Oldest donor: William G Denhard '42 PKS, Clinton Springer '45 (deceased)

Largest # of donors: DTD 46, PKS 44, PSK 40

Most \$ donated (no capital campaign): KS, PBE



IRDF: 2019 MIT 24-Hour Challenge

- Raised \$49,284 for the IRDF
- \$24,284 was the result of 215 gifts from generous alums, students, friends and families
- \$25,000 in matching funds from the 484 Foundation, the alumni foundation of Sigma Alpha Epsilon



IRDF50⁺ YEARS
INDEPENDENT RESIDENCE DEVELOPMENT FUND

Where to find more information?

- IRDF web site: <http://web.mit.edu/irdf/>



- IRDF FAQs – developed this year
- Contact
 - Scott Klemm, FCI Executive Director, sklemm@fsilg.coop
 - Pam Gannon, Director of FSILG Alumni Programs, pmgannon@mit.edu



IRDF: Sustainability and Planning for the Future

- Value of the fund: \$20,000,000
\$15,000,000 out in loans; \$20,000,000 given out in grants 1997-2020
Some funds committed to particular organizations (capital campaigns)
Allocation for EOGs and minor project grants
- Major source of income for the IRDF is alum donations and interest on IRDF loans
- We are working with MIT Resource Development and the Annual Fund to encourage more donations to the IRDF
- 90/10 split could incentivize donations for major project grants BUT “unrestricted” donations to the community fund are essential for the health of the FSILG community overall
- ***Survey – please respond!***

